

Wexford County Council Climate Action Plan (2024-2029)

Implementation Report 2024



Contents

Introduction	1
Full Accountability	1
Influencing, Advocating and Facilitating other Sectors.....	1
Climate Action Reporting	1
Climate Action Tracker Report	4
Progress of Actions	6
Governance and Leadership (GL)	6
Built Environment and Transport (BET)	13
Natural Environment and Green Infrastructure (NEGI).....	19
Communities, Resilience & Transition (CRT).....	26
DZ Actions Overview	37
Climate Actions and UN Sustainability Goals	39
Acknowledgements	39
Appendix I:	40

Introduction

This is the first progress report of the Wexford County Council Local Authority Climate Action Plan 2024-2029. The plan was adopted by the elected members in February 2024 and published in March 2024. This progress report reflects the plan implementation period from February 2024 to December 2024.

Data and information contained within this report offers an accurate and transparent picture of progress in the first year of the plan. This aligns to the Government's National Climate Objective, to achieve the transition to a climate resilient, biodiversity rich, environmentally sustainable and climate neutral economy by 2050.

Full Accountability

The core targets of Wexford County Council's Climate Action Plan are a 51% reduction in the Council's greenhouse gas emissions by 2030 and 50% improvement in the Council's energy efficiency by 2030

In addition, the plan includes a range of climate adaptation actions, aimed at improving the resilience of the County to the impacts of climate change as well as a range of mitigation actions, to reduce future impact on the climate.

Influencing, Advocating and Facilitating other Sectors

While the Climate Action Plan specifically sets out Wexford County Council's full accountability for reducing greenhouse gas emissions across its own assets, the Council is also committed to influencing, advocating and facilitating other sectors, to meet their own climate targets and ambitions. Wexford County Council engaged with a number of sectors, organisations and groups since the plan was adopted in February 2024. The Climate Action team initiated/engaged/attended numerous public awareness events to emphasise the Climate Action message to the citizens of Wexford. These sectors and stakeholders included Agriculture, Sustainable Energy Communities (SEC), Business Sector, Community & Voluntary groups, PPN, Educational and Third Level Institutions.

Climate Action Reporting

The following outlines the Climate Action reporting completed by the Climate Action Team for 2024 as set out below.

Monitoring and Reporting (M&R)

The Council continues to report on energy performance and emission targets annually to the SEAI. To track progress, the Council will continue to engage with South East Energy Agency in the delivery of our climate actions.

Energy Elephant

Wexford County Council (WCC) collates, measures, and evaluates energy performance using Energy Elephant a third-party monitoring and targeting software application.

Energy Elephant is Wexford County Council's central repository for our utilities meter and consumption point portfolio, cost and consumption data.

This software allows WCC to report, track, target and identify saving opportunities for all SEUs (significant energy users) and smaller usage points across the organisation for buildings, vehicles and other assets.

ISO 50001

Wexford County Council maintain a certified Energy Management System (EnMS) to the international management standard I.S. EN ISO 50001:2018. Our ISO 50001 EnMS demonstrates Wexford County Council's commitment to manage, conserve and decarbonise our use of energy across the organisation. ISO 50001 is a means for Wexford County Council to adhere to a structured process for continual improvement of our energy performance, energy management systems to comply with national public sector climate action targets to 2030 and beyond.

In 2021, Wexford County Council was NSAI Certified to I.S. EN ISO 50001. A recertification audit was carried out in May 2024. The next surveillance audit is scheduled for April 15th, 2025.



National Climate Action Plan

The Council will, in accordance with Part 3(w) of the Local Authority Climate Action Charter, continue to report annually to the DECC on progress on climate action at local level as part of the delivery of the national climate objective.

Sectoral Performance

The Council continues to report annually on their performance on climate action by way of KPIs to inform the performance of the local government sector on climate action, as part of the local government DECA 2030 Strategy.

The Climate Action Team (CAT) compiled the Climate Action Data Overview and submitted to the CCMA ECCE Committee. The results are as per Figure 1 for Wexford County Council.

The status of all 133 climate actions within Wexford County Council’s Climate Action Plan is detailed below.

Note: A recurring action is an action that will be implemented on more than one occasion during the lifetime of the plan. This could be that the action is to be implemented every year or on multiple occasions during this plan’s timeframe.

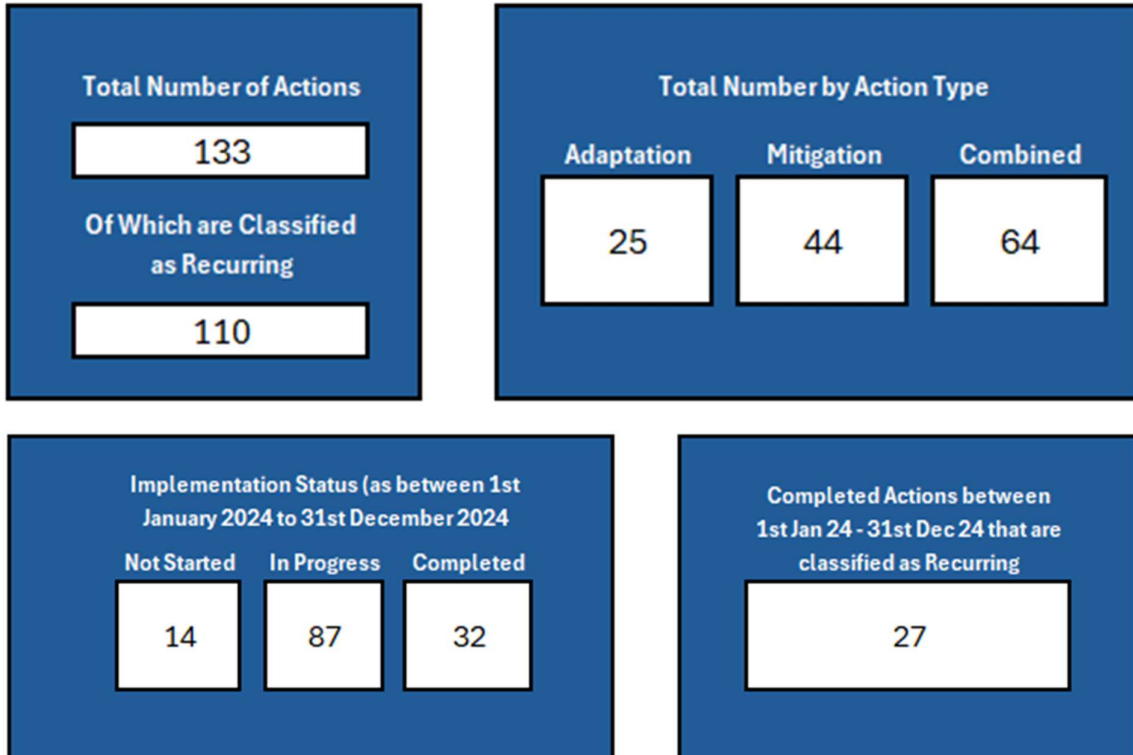


Figure 1: Climate Action Data Overview submitted to the CCMA ECCE Committee

Internal Reporting

- Climate Change, Biodiversity and Environment Strategic Policy Committee (SPC)
- Monthly Climate Action Steering Group
- Climate Action Internal Tracker

Wexford County Council reports to the Elected Members on an annual basis, through an annual Climate Action Plan Implementation Report (CAPR), as outlined below.

Climate Action Tracker Report

The Climate Action Team in Wexford County Council, with support from the IT Section, developed a bespoke Climate Action Tracker to record the progress on all KPIs across all actions. The Tracker is designed to allow all staff members with access to the tracker to update the progress on their own actions. Fifty-four members of staff updated the tracker, outlining progress on their actions.

The Climate Action Plan contains 133 actions (including DZ actions) across 5 Action Areas (see Figure 4). 95 of these actions relate to the entire County with 38 actions specific to the Enniscorthy Decarbonisation Zone (DZ). The total actions per Action Area are outlined in Figure 5. A sample of actions from each of the action areas will be outlined in this report.

The statistics from the Climate Action Tracker report below are comprised of the status of all 240 Key Performance Indicators (KPIs) that relate to the 133 climate actions across. Some of the actions have numerous KPIs associated with them across 23 sections and operational areas (See Figure 2).

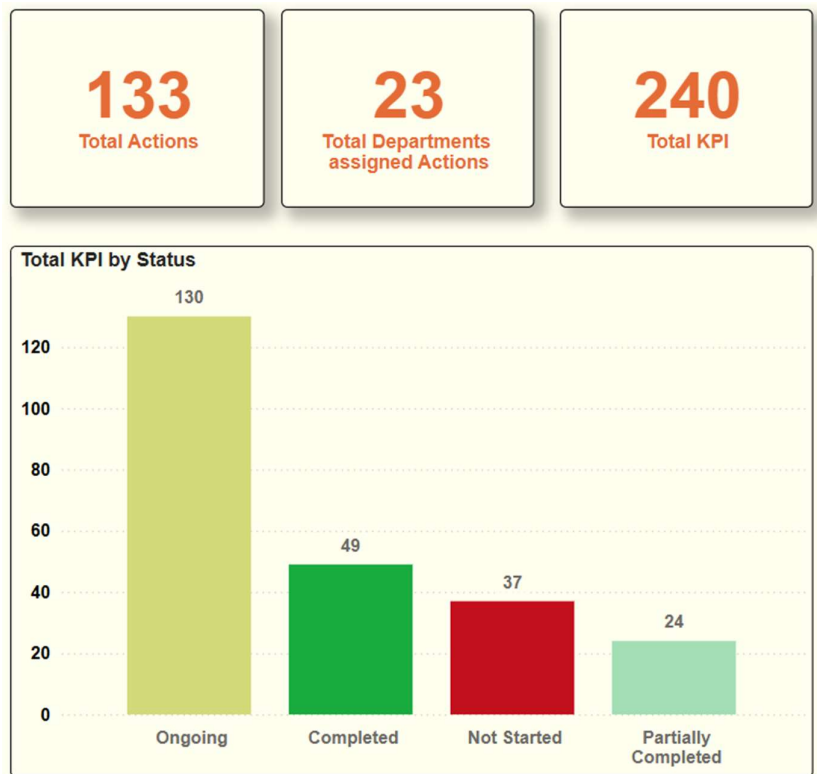


Figure 2: Wexford County Council status of Key Performance Indicators (KPI)

Climate Action Tracker Report - KPI status by Directorate

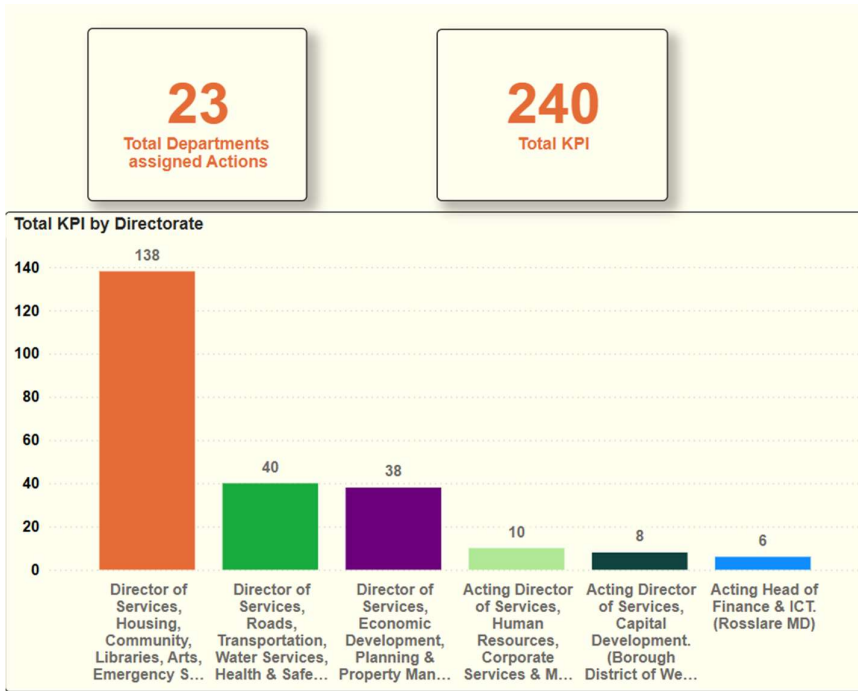


Figure 3: KPI by Directorate



Figure 4: Five Action Areas in Wexford County Council Climate Action Plan



Figure 5: Total Number Actions per Action Area (including DZ Actions)

Progress of Actions

A suite of sample actions across the 5 Action Areas have been selected including relevant case studies and are outlined below.

Governance and Leadership (GL)

The governance element focuses on climate action resources within Wexford County Council and how they can be utilised to raise awareness on climate actions. It aims to foster ownership of actions in every service we provide as a Local Authority and through the incorporation of climate actions into all our policies and plans and functions.

Table A below outlines the details of Action GL1:

Action No	Action Description	Adaptation or Mitigation	KPI	Status
GL1	Wexford County Council will reduce its energy usage by 50% and greenhouse gas emissions by 51% by 2030.	Adaptation & Mitigation	a) Yearly roadmap of planned emissions reductions. b) % of Energy reduction per year. c) % of greenhouse gases reduction per year.	In Progress

Wexford County Council is obligated to achieve a 51% reduction in GHG carbon emissions (based on a 2016-2018 baseline) and a 50% improvement in energy efficiency (based on a 2009 baseline) by 2030 under the Climate Action Plan 2023 set out by the government.

The SEAI M&R system provides an annual breakdown of gap to target to achieve these targets. The summary for 2023 is outlined below. 2024 figures are still provisional and have not been finally verified by SEAI. Provisional figures are due from SEAI by end of Q2 2025.

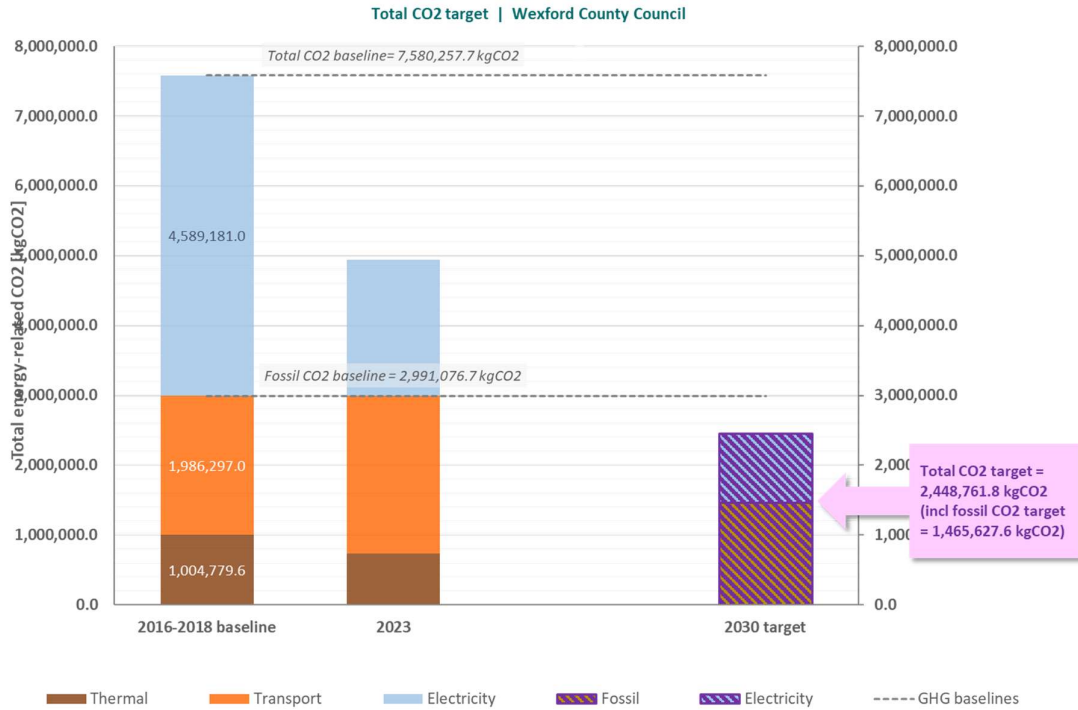


Figure 6: 2030 Gap to Target based on 2023 data

2030 TARGET 1 – TOTAL CO₂ TARGET

In 2023 Wexford County Council has reduced total carbon emissions (Electricity+Thermal+Transport) by 452,081kgCO₂ (-8%) compared with 2022. In 2023, Wexford County Council was 34.9% below our 2016-2018 baseline of 7,580,258 kgCO₂. Based on the current SEAI gap to target model Wexford County Council must save an additional 2,491,206 kgCO₂ in the next seven years to meet our 2030 total carbon emissions target of 2,447,241 kgCO₂.

Note: The baseline figure provided in the adopted Climate Action Plan for Total CO₂ eq was 7,114,504 kg CO₂ (7.11ktCO₂eq). This baseline figure has been revised and verified to 7,580,257.7 kg CO₂ eq for the SEAI M&R reporting system due to more up to date transport figures acquired in 2024.

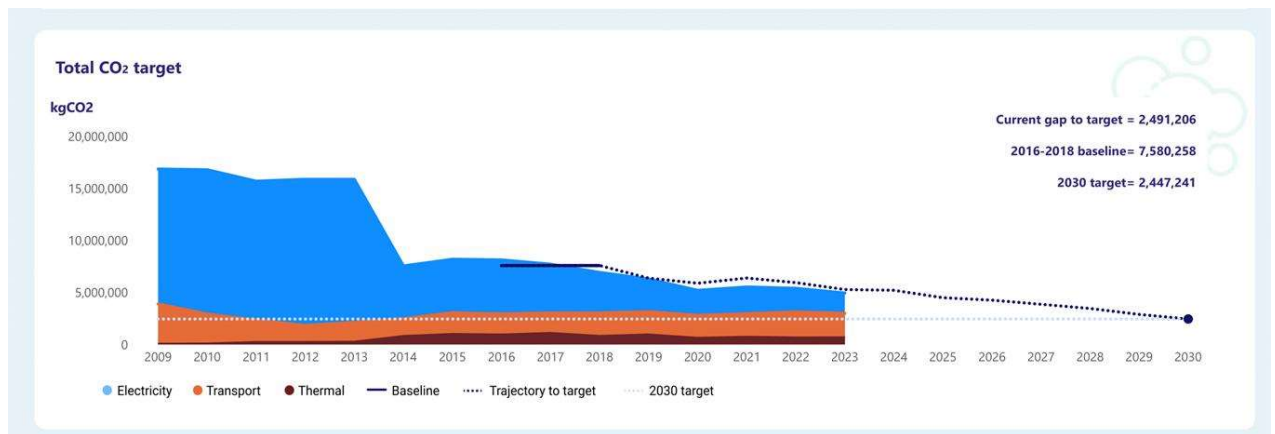


Figure 7: 2030 - TOTAL CO₂ TARGET

2030 TARGET 2 – FOSSIL FUEL CO₂ TARGET

In 2023, Wexford County Council has reduced fossil fuel carbon emissions (Thermal+Transport) by 131,829kgCO₂ (-4%) compared with 2022. In 2023, Wexford County Council was on par (-0.05% change) with our 2016-2018 baseline of 2,991,077 kgCO₂. Based on the current SEAI gap to target model Wexford County Council must save an additional 1,523,977 kgCO₂ in the next seven years to meet our 2030 total carbon emissions target of 1,465,628 kgCO₂.

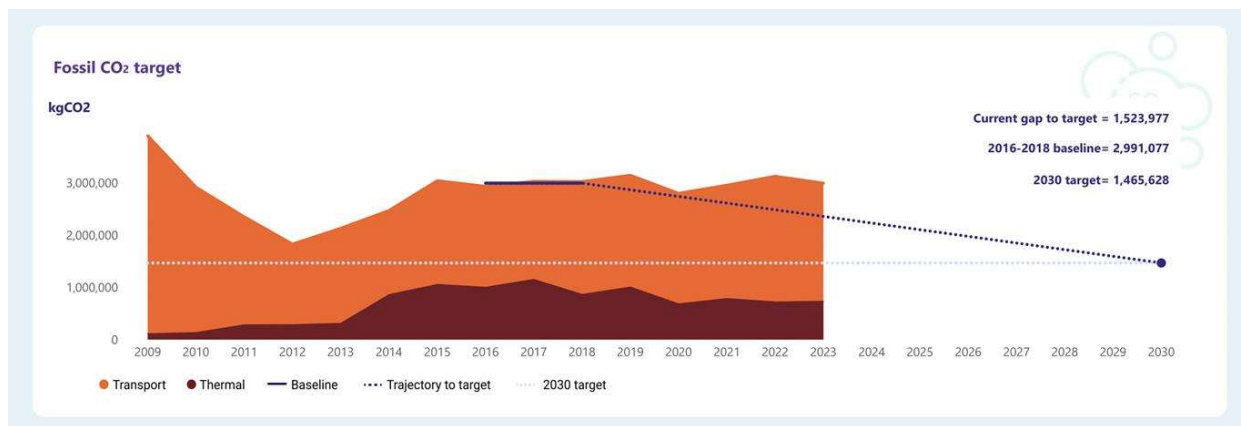


Figure 8: 2030 Fossil Fuel CO₂ target

2030 TARGET 3 – ENERGY EFFICIENCY TARGET

In 2023, Wexford County Council has improved organisational energy efficiency by 3.8% compared with 2022 or 42.3% since our 2009 Baseline. To achieve our 2030 50% Energy Efficiency improvement target Wexford County Council must improve by another 7.7% within the next seven years.

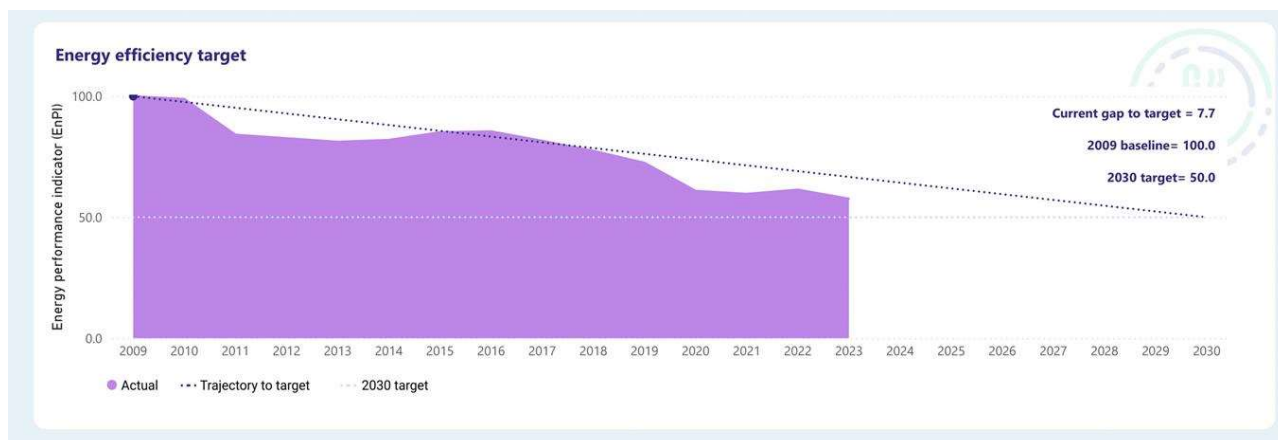


Figure 9: 2030 Energy Efficiency Target

Note: Wexford County Council took over operational management of the Waterfront Pool & Leisure Centre in Enniscorthy in March 2024 to ensure the complex continues to serve the people of Enniscorthy and the District, into the future. The addition of this Significant Energy User (SEU) will impact Wexford County Council’s gap to target reporting, as the addition of the Waterfront Pool & Leisure Centre will add a further circa 200 tonnes of CO₂ per annum to our 2030 gap to target from 2024 onwards.

Table B below outlines the details of Action GL2:

Action No	Action Description	Adaptation or Mitigation	KPI	Status
GL2	Mainstream Climate Action across all functional and service areas (through the Climate Action Steering Group) and ensure it is an integral consideration in all policies, plans, strategies, and procedures. Generate expenditure codes within the Financial Management System for major weather events and energy upgrade projects, and provide awareness to staff on use of codes to fully capture all costs	Adaptation & Mitigation	a) Number of Council policies, plans, strategies and procedures where climate action is a significant consideration. b) Assign financial codes and provide awareness to staff on use of financial costs for climate related events.	In Progress

Climate Action objectives and actions have been integrated into numerous policies, strategies, plans and reports associated with Wexford County Council. Listed below are some of the documents that strategically impact the Council and County, to enable behavioural change, effectively, from the individual to the community of

Wexford as a whole. The Climate Action Steering Group has been in place for several years, with representatives from all the sections and met ten times throughout 2024.

Wexford County Council prioritises climate action across the functional and operational areas, as reflected in the Vision of Wexford County Council's Corporate Plan 2024-2029:

Our Corporate Plan outlines our vision for Wexford ... *"a progressive and inclusive County that values its people and heritage, celebrates its natural beauty, prioritises sustainability and where our communities take pride in their shared future"*.

Wexford County Council's Project Endorsement Proposal Form now incorporates a climate element. The Climate Team are in discussions with the Finance Section on tracking climate action spend in various sections via finance codes. A pilot project will focus on capital spending.



These plans and policies that incorporate a climate element can be accessed in Appendix 1.

Table C below outlines the details of Action GL3:

Action No	Action Description	Adaptation or Mitigation	KPI	Status
GL3	Appointment of a dedicated Energy Officer, Facilities Manager and a Biodiversity Officer (in addition to the existing Heritage Officer) and the continued commitment to the three positions of a Climate Action Coordinator, a Climate Action Officer and a Community Climate Action Officer.	Adaptation	a) Appointment of Biodiversity Officer, Facilities Manager & Energy Officer. c) Role commitment for the three dedicated roles within the Climate Action Team.	In Progress

The Biodiversity Officer role and the Energy Officer role were both filled in 2024. The Climate Action Team is now at full complement with a team of six in place. The filling of the Facilities Manager role is underway.

Role commitment for the three climate roles is being addressed this year at a national level between the CCMA, LGMA and the Department of Environment Climate and Communications.



Table D below outlines the details of Action GL6:

Action No	Action Description	Adaptation or Mitigation	KPI	Status
GL6	Promote MapAlerter to increase the number of registered users and raise awareness among the public and target groups of the various communication channels available in advance of extreme weather events	Adaptation & Mitigation	a) Increase in alert recipients. b) Number of farmers signed up for advance extreme rain warning pre slurry spreading.	Completed


Wexford County Council launched the Agri MapAlerter notification system for farmers in County Wexford in Summer 2024 at the Bannow & Rathangan Agricultural Show.

MapAlerter is a communications service available across Ireland. Alerts are mainly issued by Irish local authorities for a variety of topics. Wexford County Council is the only local authority to have developed this notification specific for farmers for advice on spreading in their own local area based on rain forecast.


An interactive map was created with the County delineated by areas at risk of surface water run-off (Phosphorus specifically).

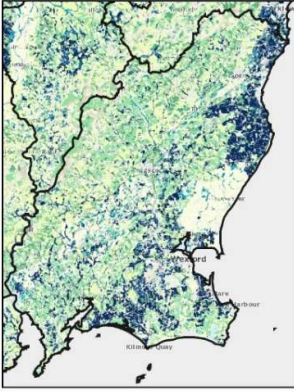
MapAlerter

Agricultural alerts for your local area

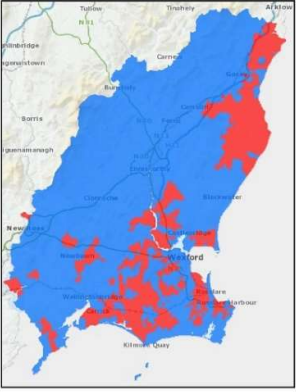


**ATTENTION
WEXFORD FARMERS**






● High Phosphorous Sensitivity
● Low Phosphorous Sensitivity



● Assess Land 96 Hours After Heavy Rainfall
● Assess Land 48 Hours After Heavy Rainfall



1

48 hours prior to a heavy rainfall event - chemical fertilisers and organic manures must not be spread.

2

MapAlerter offers text alerts, notifying of date and time, when land can be assessed for spreading.

The
3 R's

Right field... Right time...
Right rate!



SCAN HERE
AND
SIGN UP FOR FREE!
<https://www.mapalserter.ie/signup>



Governance and leadership actions in County Wexford also support the following United Nations Sustainable Development Goals:



Built Environment and Transport (BET)

This area is focused on our efforts to reduce greenhouse gas emissions by 51% and energy consumption by 50% by 2030 in our Built Environment and Transport and increase the resilience of our assets.

Table E below outlines the details of Action BET4:

Action No	Action Description	Adaptation or Mitigation	KPI	Status
BET4	Maximise Wexford County Council's delivery of upgraded properties under the Energy Efficiency Retrofit Programme in line with department targets, having due regard to environmental sensitivities such as local human receptors, European sites and biodiversity, and the need to appropriately protect and conserve protected structures in accordance with relevant protected structures regulations	Mitigation	Number of upgrades of Social Housing in line with Department targets per annum.	Completed

The Energy Efficiency Retrofit Programme (EERP) is in its fourth year of a ten year programme. The aim of this programme is to upgrade social housing properties to a minimum of B2 rated and move them away from fossil fuels and towards more energy efficient alternatives such as air to water heat pumps.

There were 116 properties allocated for upgrading Countywide in 2024 under the EERP. Upgrades were completed on a total of 118 properties in the County under the EERP in 2024.



Property before Upgrade Works



Property after Upgrade Works

Table F below outlines the details of Action BET5:

Action No	Action Description	Adaptation or Mitigation	KPI	Status
BET5	Continue to support the roll out of the public lighting retrofit Programme while ensuring the lumen levels and spectral range are maintained or reduced/controlled to avoid effects to biodiversity	Mitigation	a) Number and/or of public lighting retrofits completed. b) CO ₂ savings.	In Progress

Countywide 93% of lanterns have been upgraded to LED as of December 2024. This equates to 14,733 of the 15,843 lanterns in place. Approximately 900 lanterns are still to be upgraded to LED. A number of projects were completed in 2024 including the three roundabouts on the Enniscorthy Bypass and 120 lanterns on the roundabout junctions of the M11 Enniscorthy Bypass were upgraded.



Photo of Public Lighting before LED Retrofitting

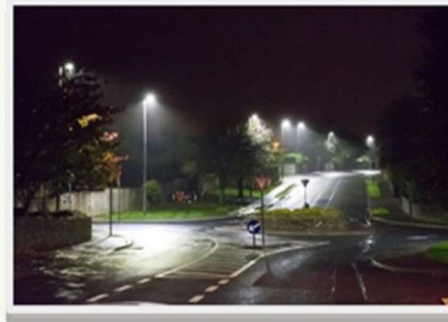


Photo of Public Lighting after LED Retrofitting

Table G: Overview of works completed and wattages saved 2017-2024

Year	Total Number of Lanterns	Total Wattage (kWh/Year)	Wattage/lantern (kWh)
2017	13,941	6,597,620	473
2024	15,843	3,027,000	191

The infographic below summarises the Public Lighting Upgrade statistics:

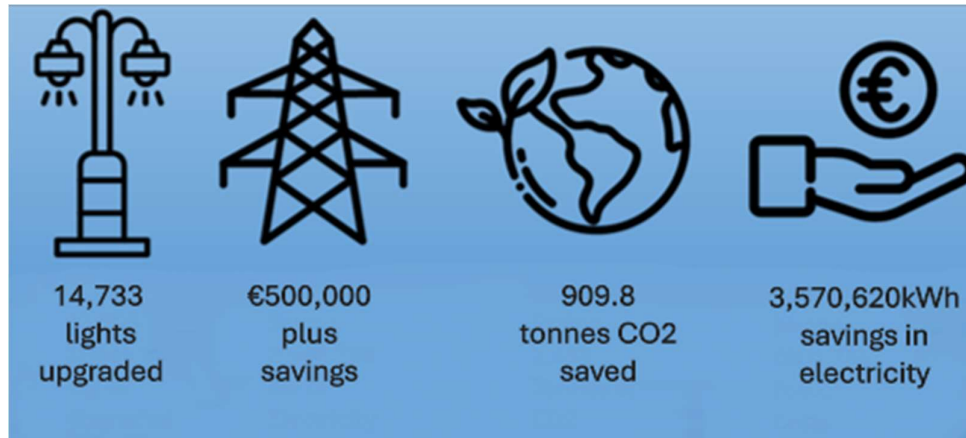
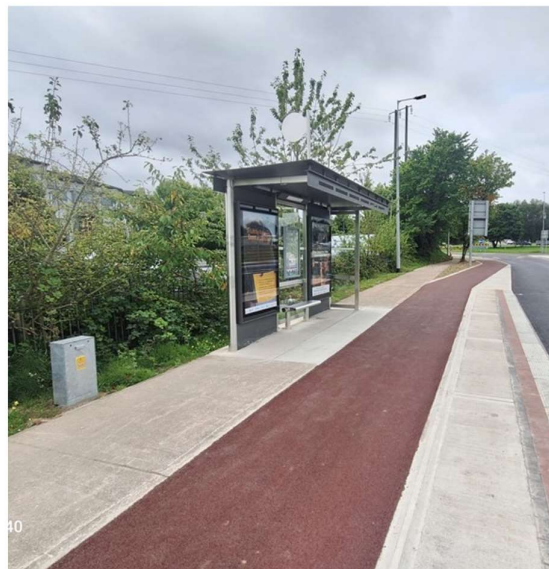


Table H below outlines the details of Action BET9:

Action No	Action Description	Adaptation or Mitigation	KPI	Status
BET9	Support the roll out Active Travel initiatives and promote a modal shift to more sustainable travel through: <ul style="list-style-type: none">) Pathfinder projects - three interconnecting schemes - Newtown Road, Beech Lawns/ Clonard and Roxborough, Wexford Town.) Safer Routes to Schools' Schemes across County Wexford. Twenty-six schools in conjunction with the National Transport Authority and An Taisce.) Installation of segregated cycle path and footpath as part of Oaklands to Kents Cross New Ross Active Travel Scheme having due regard to environmental sensitivities such as the receiving water environment, biodiversity, European sites, local air quality, cultural heritage.	Mitigation	<ul style="list-style-type: none"> a) Completion of circa 18km of segregated cycle and footpaths. b) Increase in walking and cycling to school in schools in County Wexford. c) Number of schools with enhanced front of school safety works discouraging car use at the school gates. 	In Progress



Newtown Road Scheme before works



Newtown Road Scheme after works

Phase 1 of the Newtown Road Scheme was substantially completed in July 2024. Section 38 planning permission has been approved for Phase 2 (Applegreen to Boggans) and Phase 3 (Hospital Junction to Wygram). The tender package is

currently in production, with construction to commence thereafter.

Beech Lawn/Clonard and Roxborough are being progressed through the planning process.

Three Safe Routes to School (SRTS) for Gorey Central School, Crossabeg and Ramsgrange commenced construction in Q4 2024.

Table I below outlines the details of Action BET17:

Action No	Action Description	Adaptation or Mitigation	KPI	Status
BET17	Promote reuse/repurposing of existing buildings rather than the construction of new buildings through various funding streams including Urban Regeneration Development Fund and Rural Regeneration Development Fund e.g. New Ross Enterprise Centre and Gorey Market House having due regard to the need to appropriately protect and conserve protected structures in accordance with relevant protected structures regulations, and the need to not negatively impinge on any protected species	Mitigation	a) Register of buildings reused/ repurposed.	In Progress

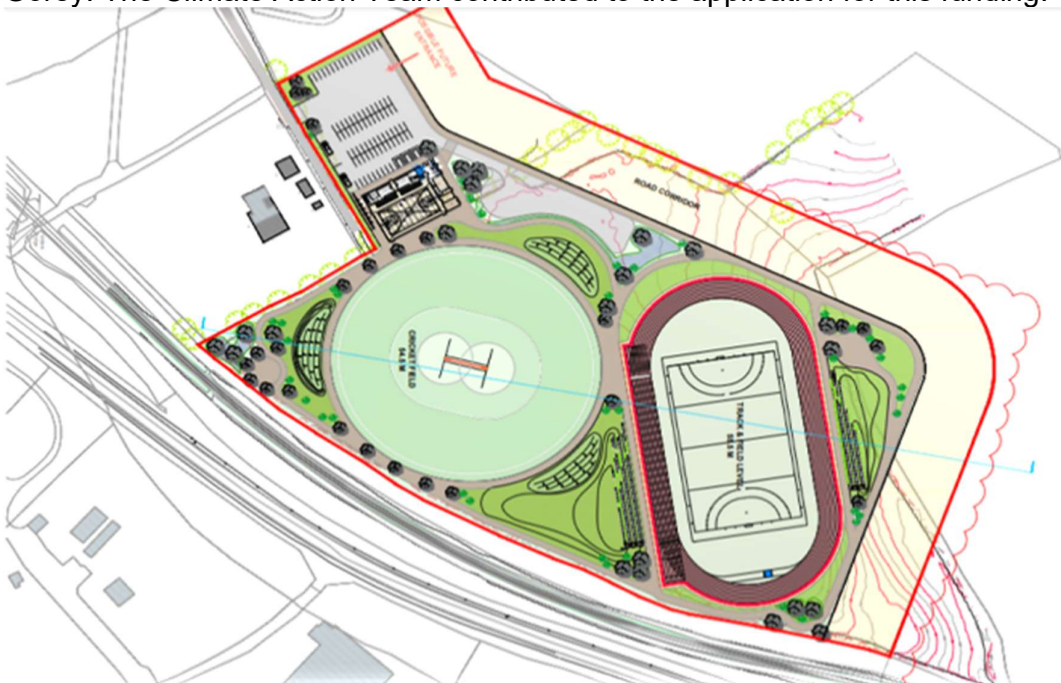
Wexford County Council is set to benefit from funding of up to €7 million under THRIVE, the Town Centre First Heritage Revival Scheme, awarded under the Southern, Eastern & Midland Regional Programme 2021-2027 in the summer of 2024.

This funding will be utilised to regenerate the oldest building in Gorey - Gorey Market House - which is associated with the foundation of Gorey Town and is in line with the Town Centre First approach. This cherished building was identified for regeneration and following extensive engagement with a diverse group of stakeholders and citizens, a co-created design for the regeneration of the building was developed. Gorey Market House will be converted into a new community and cultural hub by opening up the three arches on main street, regenerating the existing building, building an extension to facilitate accessibility to upper floors and the creation of new café to the rear. By opening the arches, it will provide access to the rear of the building creating a new market plaza for Gorey which will be utilised for markets, concerts and events. It will also create a new gated entrance to the graveyard beyond the site which will provide access to a designated heritage trail. The Climate Action Team contributed significantly to the “Climate Proofing” and “Do No Significant Harm” elements of the application for funding.



Gorey Market House approved funding under THRIVE, the Town Centre First Heritage Revival Scheme

Wexford County Council received grant funding in November 2024 of €4.9 million under the Large Scale Sports Infrastructure Fund from the Department of Tourism, Culture, Arts, Gaeltacht, Sport, and Media. This is, for the first phase development of a new sports complex at the former St. Waleran's Demesne site to the north of Gorey. The Climate Action Team contributed to the application for this funding.



Site Layout Plan for proposed development at St Waleran's site

Built Environment and Transport actions in County Wexford also support the following United Nations Sustainable Development Goals:



Natural Environment and Green Infrastructure (NEGI)

This Action Area seeks to promote effective biodiversity management and to enhance protection of our natural habitats and landscapes. It aims to protect the quality of our waters and to enhance our inland and coastal areas. Our natural environment can be greatly impacted by climate change, but it also offers great opportunities for successful climate change mitigation and adaptation.

Table J below outlines the details of Action NEGI 2:

Action No	Action Description	Adaptation or Mitigation	KPI	Status
NEGI 2	Wexford County Council will develop and progress suitable coastal protection measures, as identified through the monitoring and inspection programmes for vulnerable areas of coast and existing public coastal defense's subject to funding, statutory consent and national policies and guidelines, including schemes such as Rosslare, Courtown and Seaview having due regard to the need to promote nature based solutions and Sustainable Drainage	Adaptation	<ul style="list-style-type: none"> a) Number of cost benefit analyses complete. b) Number of schemes approved. c) Number of schemes completed. d) Number of baseline surveys of effected areas. e) Number of follow up survey of effected areas. f) Number of ongoing surveys to check impact. 	In Progress

	Systems, and environmental sensitivities associated with coastal areas such as the receiving marine environment, biodiversity, European sites, recreation and amenity value			
--	---	--	--	--

Cost Benefit Analysis (CBAs) assessments have carried out for the following:

- Rosslare Coastal Erosion and Flood Relief Scheme (Rosslare CEFRS)
- Seaview Coastal Protection Scheme (Seaview CP)
- Ballyhealy Preliminary Erosion Assessment
- St Helen's Preliminary Erosion Assessment
- Grange Beach Cliff Stabilisation

Other CBAs will be carried out as required once suitable schemes are identified.

Extensive baseline surveys were carried out at Rosslare and Seaview and these schemes are progressing in accordance with the project programme.

There is ongoing monitoring and inspections of the coastline with preliminary risk assessments and reports carried out for Kilpatrick, Cahore, Rosslare Strand, St. Helen's, Ballyhealy, Seaview, Grange, Carnivan, Hook Head.

The construction contract was awarded in October 2024 for Seaview Coastal Protection with works due to start January 2025.

The scheme at Cahore is subject to funding approval from Office of Public Works.

Numerous surveys have been carried out at several locations along our coastline, in particular, after extreme weather events.



Grange Beach cliff stabilisation



Coastal erosion at Seaview, Kilmore

Table K below outlines the details of Action NEGI 13:

Action No	Action Description	Adaptation or Mitigation	KPI	Status
NEGI 13	Assessment of Wexford County Council owned land to identify areas suitable for restoration and enhanced carbon storage through tree-planting and biodiversity measures.	Adaptation & Mitigation	a) Register of land suitable for restoration.	In Progress

Three sites are planted to date under the Woodland Creation on Public Lands Scheme. Sites at Ballytreacy, Taylorstown and Cushinstown have been planted with a native woodland mix. A fourth site at Kilcorral has been identified as a potential site for planting in the future.



Filming for a series on woodlands on public land.

This site at Cushinstown is establishing really well. Just off the N25, the site comprises approximately 1.8 hectares and is planted with a mix of oak, birch, alder and hazel. The video is posted on YouTube at [Farm Forest - YouTube](#)

Table L below outlines the details of Action NEGI 16:

Action No	Action Description	Adaptation or Mitigation	KPI	Status
NEGI 16	Promote climate action projects that support and protect habitats such as wetlands and flood zones which contribute to green infrastructure having due regard to environmental sensitivities such as European sites, biodiversity and amenity value.	Adaptation & Mitigation	a) Register of Projects.	In Progress

In 2024, a survey was carried out of wetlands in the Enniscorthy District Area. This is the second phase of the survey with the Gorey Area being surveyed in 2023. The aim of the survey is to provide in-depth surveys which will highlight the importance of wetland habitats and will aid their long-term survival, thus benefitting the County's biodiversity. The results of the survey will be shared and added as a layer on the Council's GIS database raising awareness and made available to inform decision makers.



The Wexford Wetlands Survey identified many sites which supported wetland habitats of conservation significance. One such wetland at Bolabeg, is a wet woodland on the River Glasha, Bunclody.

Table M below outlines the details of Action NEGI 19 & 21:

Action No	Action Description	Adaptation or Mitigation	KPI	Status
NEGI 19	Liaise & collaborate with Teagasc and other advisors to influence and advocate towards more sustainable agricultural and forestry practices including Signpost Programmes and Forestry Schemes.	Adaptation	a) Number of people signed up for Teagasc Signpost Programme. b) Number of people attending farming sustainability events.	Completed
NEGI 21	Implement a collaboration project with a series of “Champion Farmer” events around the County to showcase what agriculture and forestry is doing for climate change, water quality and biodiversity	Adaptation & Mitigation	Number of events	Completed



Future Farm Signpost Farm Event held in May 2024 at farm of Shay Ryan

During Climate Action Week 2024, a Future Farm Signpost Farm Walk was hosted by Teagasc in partnership with Wexford County Council and Tirlán. The event took place on the dairy farm of Shay Ryan, Cushinstown and showcased some of the measures the agriculture sector is undertaking to address climate action, water quality and biodiversity. Experts in solar energy, environment schemes and funding, and forestry were all on hand, as were representatives from the National Biodiversity Data Centre. There were information stands on solar energy (FarmGen), the farm accident support network (Embrace), ASSAP advisors (Tirlán) at the event. Approximately 60 people attended the event which was a mix of farmers, members of the public and members of voluntary/community groups.



Table N below outlines the details of Action NEGI 27:

Action No	Action Description	Adaptation or Mitigation	KPI	Status
NEGI 27	Roll out tenant awareness programme to include and promote biodiversity/pollinator awareness and encourage and support engagement of residents in local led community action through a resident's award system	Adaptation & Mitigation	a) Number of tenants who sign up to the awareness programme or completed it. b) Number of entrants in the biodiversity award.	Completed



The Climate Action Team supported the Council's Residents & Awards Day on 30th October in the Riverside Park Hotel, Enniscorthy. The Team made presentations on climate action, biodiversity and home energy efficiency.

Natural Environment and Green Infrastructure actions in County Wexford also support the following United Nations Sustainable Development Goals:



Communities, Resilience & Transition (CRT)

Wexford County Council recognises the crucial role communities play in climate action at local level. Supporting the creation of low carbon communities and building climate resilience while providing supports in terms of skills, knowledge and funding is key. It aims to develop mechanisms to engage with and support communities on climate action by empowering them to become sustainable, inclusive and climate resilient.

Table O below outlines the details of Action CRT1:

Action No	Action Description	Adaptation or Mitigation	KPI	Status
CRT1	Encourage community groups to pursue climate action projects at local level through the Community Climate Action Programme (CCAP) and support & facilitate them in accessing funding through various channels/initiatives	Adaptation & Mitigation	<ul style="list-style-type: none"> a) Number of funding applications made. b) Number of funding applications approved. c) Number of projects completed (CCAP). d) Number of communities engaged in climate action (Community Section). 	Completed



Wexford County Council in association with the Department of the Climate, Environment and Energy, has rolled out the Community Climate Action Programme (CCAP). Funding is available for not-for-profit community groups and clubs for up to 100% of the cost of a climate action project.

Phase one of the Programme was extensively promoted within the County. A total of 52 applications were received. The funding allocation for Wexford amounted to €669,000 with 16 groups awarded funding after a competitive assessment process. The Programme was oversubscribed by a factor of three, both in terms of funding requested and numbers of applications received.

Applicants were encouraged to include diverse measures across the prescribed themes of energy, active travel, food, shopping & recycling and local environmental action. While a combined total of 207kW of solar PV

panels are included in some of the 16 successful projects, numerous other cross-themed measures were included such as:

- Solar PV & battery storage
- Lighting upgrades
- Floodlight generator decommissioning
- E-bike library
- Swap shops
- Rainwater gardens
- Vegetable gardens
- Biodiversity enhancement



Grantees have 18 months to complete their projects and in the time since the grants were finalised in September, 2024, four of the projects had completed their initial phase of works by the end of 2024, with a total spend of €90,340.25



Cavity wall pumped at Marshalstown GAA Club



Vegetable beds ready for planting at Reachability

Table P below outlines the details of Action CRT2:

Action No	Action Description	Adaptation or Mitigation	KPI	Status
CRT2	Organise and host themed events based on areas such as energy saving and energy use reduction, renewable energy, biodiversity, climate literacy, sustainable lifestyles, environmental awareness, climate action health and wellbeing projects and sustainable development goals, to actively and equitably participate in climate action	Adaptation & Mitigation	<ul style="list-style-type: none"> a) Number of events held annually over the Climate Action Plan. b) Number of new “Skills for Life” Programmes run by the five branch libraries. c) Number of participants in the “Skills for Life” Programme 	Completed

A new Community Energy Hub was launched in the libraries across the South East in September 2024. The hub is a reliable, independent, and trusted resource that helps households, community groups, and businesses better understand their energy use and access grants and energy-saving information..

A number of monthly Energy Advice Drop-in-Clinics were held in 2024, where the public had an opportunity to have a one to one chat with expert Energy Engineers from South East Energy Agency. Advice is provided on a range of topics including what the best energy upgrade measures to go for, Energy Audits and Solar PV amongst others. Clinics were held in the Wexford and New Ross Libraries and will roll out to the other libraries in the County in 2025.



Launch Of Community Energy Hub at Wexford Town Library

A number of other energy clinics and expos were held throughout 2024 across the County both during Climate Action week in May 2024 and for other events such as the launch of master plans for some of the Sustainable Energy Communities in County Wexford.

The libraries throughout the County hosted a range of events across a number of themes throughout 2024 including

- Biodiversity
- Wildlife
- Ecology/Zoology
- Heritage
- Conservation Projects
- Science week
- Climate Action
- Climatology
- Waste Minimisation
- Technology
- Environment

Wexford County Council held its first Climate Action Week (CAW) from May 13th - May 19th 2024. The week was about raising awareness on Climate and Sustainable Actions to showcase various projects and initiatives across County Wexford.

The week served as a platform to inspire action and drive positive change at local level.



Food Waste Event Bunclody



Ballymoney Community Group Farm Visit



OPW Staff Energy Awareness Event



Open House (NZEB), Wexford

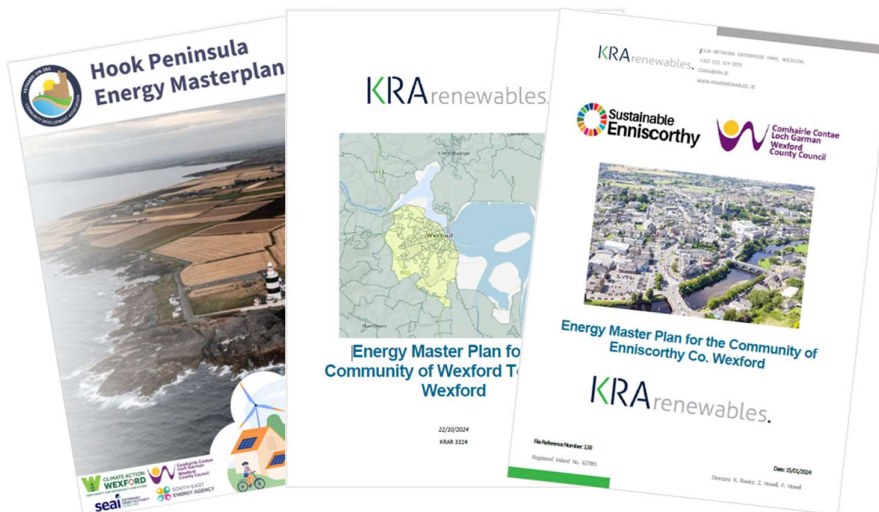


Conservation Conifers Tour, JFK Arboretum, New Ross

Table Q below outlines the details of Action CRT3:

Action No	Action Description	Adaptation or Mitigation	KPI	Status
CRT3	Support & encourage sustainable energy communities to engage in climate action at local level through the provision of bridge funding for Energy Master Plans under the memorandum of understanding through the SEAI SEC Programme	Adaptation & Mitigation	Number of Energy Master Plans completed.	In Progress

The SEAI's Sustainable Energy Communities (SEC) initiative is a funding and support programme, which helps communities to work together to become energy-smart and more sustainable. In doing so, Sustainable Energy Communities aim to use less energy by improving efficiency within the community, incorporating renewable energy and adopting smart energy technologies.



In 2024, Wexford County Council provided bridge funding totalling €60,000 for three SECs to facilitate the drafting of their Energy Master Plans (EMP). The EMP, completed by appointed consultants, presents the opportunities for developing a sustainable energy road map for that community.

As well as providing the bridge funding between the SEAI and the SECs, Wexford County Council's Climate Action Team supported numerous SEC initiatives in 2024. Such initiatives can be identified within the "Register of Opportunities" in their EMPs or actions that the groups themselves wish to champion.



Launch of the Sustainable Enniscorthy Energy Master Plan in May 2024

At the end of 2024, County Wexford had 40 Sustainable Energy Communities registered with the SEAI, with the three SECs of Wexford Town, Enniscorthy and Hook Peninsula having completed their Energy Master Plans.



Launch of Hook Peninsula SEC



Wexford SEC grant info evening

Table R below outlines the details of Action CRT15:

Action No	Action Description	Adaptation or Mitigation	KPI	Status
CRT15	Explore and develop just transition opportunities, particularly in sectors vulnerable to the effects of climate mitigation and climate Adaptation such as skills training, and energy poverty reduction measures	Adaptation & Mitigation	a) Number of supports for vulnerable groups. b) Number of people engaged.	In Progress

The community retrofitting project in the Southend/Maudlintown area of Wexford Town is a collaborative initiative led by the Southend Family Resource Centre (FRC), Wexford Town Sustainable Energy Community and Wexford County Council with support from South East Technological University (SETU) and other partners. This pilot project aims to tackle energy poverty and enhance energy efficiency in local homes by assisting residents in applying for Sustainable Energy Authority of Ireland (SEAI) retrofitting grants. To date, the project has achieved significant milestones: over 100 residents have received assistance with grant applications, three homes have undergone full retrofits, five houses are currently under assessment, 15 homes have completed external insulation work, and ten homes have had energy monitors installed to track improvements. Community information sessions focused on individual and One Stop Shop SEAI grants, have also taken place. Over a two-year period SETU will carry out research on the health and wellbeing benefits of getting homes retrofitted. The National Economic & Social Council (NESC) have included this project as an example of good practice in their report 'Energy Transition as an Opportunity to Eliminate Energy Poverty'.



Communities, Resilience and Transition actions in County Wexford also support the following United Nations Sustainable Development Goals:



Sustainability & Resource Management (SRM)

The promotion of the circular economy within Wexford County Council’s own services and functions and throughout the County is the focus here. The circular economy aims to transition from a linear economy where resources are used to make products that eventually end up as waste towards a closed-loop system where resources are valued, reused, regenerated, or recycled.

Table S below outlines the details of Action SRM3:

Action No	Action Description	Adaptation or Mitigation	KPI	Status
SRM3	Promotion of the Fleadh Ceoil in Wexford as a sustainable event, aiming to reduce single use plastics (where possible) and promoting sustainable travel through park & ride/active travel and encourage circular economy through awareness initiatives and apply lessons learned to future events	Mitigation	a) Sustainable event awareness programme. b) Sustainable implementation plan.	Completed

Waste segregation units for four waste streams was provided - recycling, food, general waste and vapes. The sustainability policy for traders included no single use plastic and compostable only to standard EN 13432. The policy also included information on correct waste segregation with links to various resources & information. Drinking refill stations were installed to reduce single use plastics and these stations are now permanent installations.

A pilot of reusable glasses took place at Breakwater Festival with over 24,000 reusable glasses used at the festival. This subsequently led to the operator 'Lantern' using reusables glasses at the Spiegeltent held during the Opera Festival in October 2024.

Twelve Park & Ride car parks were in operation during the Fleadh festival with a number of Town buses operating in the Town.

Trader's Sustainability Policy

Waste Management / Segregation of waste

All waste streams must be segregated into the separate bins provided by Wexford County Council clearly labelled with General Waste, Recycling Waste and Food Waste.

Please use bins correctly and ensure all staff are aware of the waste streams.

Use a compostable liner for your food waste before depositing in the organic food waste bin. You must use fully compostable liners – liners must carry the standard certification: EN 13432. If possible, only purchase compostable products that have been certified by Cré <https://www.compostable.ie/how-it-works/>




Waste Signage images below:









For further information please visit <https://www.mywaste.ie/business>

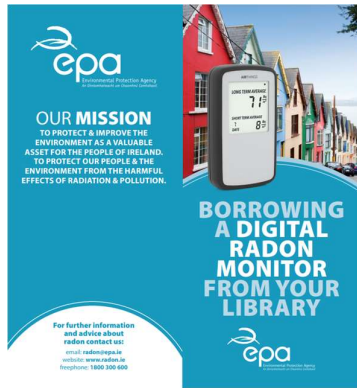
Table T below outlines the details of Action SRM6:

Action No	Action Description	Adaptation or Mitigation	KPI	Status
SRM6	Build on existing "Library of Things" collections to support and enable circular living in our communities e.g., Pilot "Seed Library"	Mitigation	a) Increase in the quantity of items available to library members for loan. b) Annual Increase in loans of "Library of Things" items.	In Progress

The "Library of Things" continues to grow and expand with a number of items now available from the branch libraries across County Wexford including:

- Digital Radon Monitor
- Biodiversity Kit
- Home Energy Saving Kits
- STAR: Sensory Toys and Assistive Resources Collection to supports children and young people with additional needs. This collection was carefully developed in collaboration with therapists.

- Adult STAR collection for adults with dementia, brain injury, autism or sensory issues.
- Vinyl Records
- Activator Poles



Examples of "Library of Things" available



Examples of "Library of Things" available

Sustainability and Resource Management actions in County Wexford also support the following United Nations Sustainable Development Goals:



DZ Actions Overview

Table U below outlines the Action details of the following Action DZ BET 8:

Action No	Action Description	Adaptation or Mitigation	KPI	Status
DZ BET 8	Active Travel Project at St. Aidan's National School, based on the Safe Routes to School Scheme having due regard to environmental sensitivities such as the receiving water environment, biodiversity, European sites, local air quality, cultural heritage	Adaptation	Number of students who have changed mode of transport, post project completion.	Completed



Improvements under Safe Routes to School Scheme at St. Aidan's National School, Enniscorthy.

Table V below outlines the Action details of the following Action DZ BET 2:

Action No	Action Description	Adaptation or Mitigation	KPI	Status
DZ NEGI 2	Investigate the feasibility of implementing a pilot study into monitor real-time CO ₂ emissions within the DZ	Mitigation	a) Installation of CO ₂ monitors and establish a baseline. b) Yearly revised readings post actions.	In Progress

Twelve new Clarity low-cost sensors are installed at a number of location at schools, the Market Square and sports grounds in November 2024. The sensors will record PM1, PM2.5 & PM10.

The TownAir Project by University College Cork and University of Galway commenced in November 2024. This is a follow up to the Source Apportionment of Particulate Matter in Urban and Rural Residential Areas of Ireland (SAPPHIRE) Project which started 2016. This will facilitate the comparison of baseline results from 2016 since introduction of national low smoke regulations in 2022.

The Sustainable Enniscorthy voluntary group are involved with traffic counters on Enniscorthy Main Street, which can link traffic volume with air quality.

Air pollution from solid fuel burning has been a key issue in the Town, however transport related pollution is not well understood, particularly in the Town centre. With a new Town Centre Regeneration Plan now in place which aims to reduce traffic in the Town centre, Sustainable Enniscorthy want to demonstrate the potential impact this will have on transport related air pollution.

In addition to air pollution, transport has been identified as a key contributor to greenhouse gas emissions in the Town as part of their energy master plan process.



Clarity Low-Cost Sensor in Enniscorthy

Climate Actions and UN Sustainability Goals

The information detailed in the report details actions and their alignment with the UN Sustainable Development Goals.

The UN Sustainable Development Goals (SDGs) are “a blueprint to achieve a better and more sustainable future for all”[2]. They represent 17 social, economic and environmental priorities designed to combat the global challenges facing humanity by 2030. Wexford County Council has an important part to play in progress toward the UN SDGs.



The Wexford County Council CAP has identified and mapped actions to the SDGs. Throughout this Implementation Report, contributions to delivering on the UN SDGs through the delivery of actions, are reflected from an environmental perspective.

Acknowledgements

The Climate Action Team wish to acknowledge contributions from the following:

- Climate Change Biodiversity and Environment Strategic Policy Committee (SPC).
- Elected Members for adopting the plan and engaging in the consultation process throughout 2024.
- Climate Action Steering Group for ongoing input into climate actions.
- Fifty-four staff members who provided updates on all the actions within their remit and all other staff who supported the Climate Action Team in 2024.
- Community & Volunteer Groups.
- Sustainable Energy Communities (SECs).
- Wexford PPN.

Appendix I:

Plans and Policies that incorporated climate elements:

[Wexford Local Economic and Community Plan 2024 - 2029.pdf](#)

https://www.wexfordcoco.ie/sites/default/files/content/CE_Report_Dec_24.pdf

[Wexford County Development Plan 2022-2028 | Wexford County Council](#)

creativeireland.gov.ie/app/uploads/2019/12/Wexford-Strategy.pdf

<https://www.wexfordcoco.ie/arts-and-culture/current-programmes-plans-and-events/wexford-county-council-arts-plan-2023-%E2%80%93>